

兔抗 TLL1 多克隆抗体

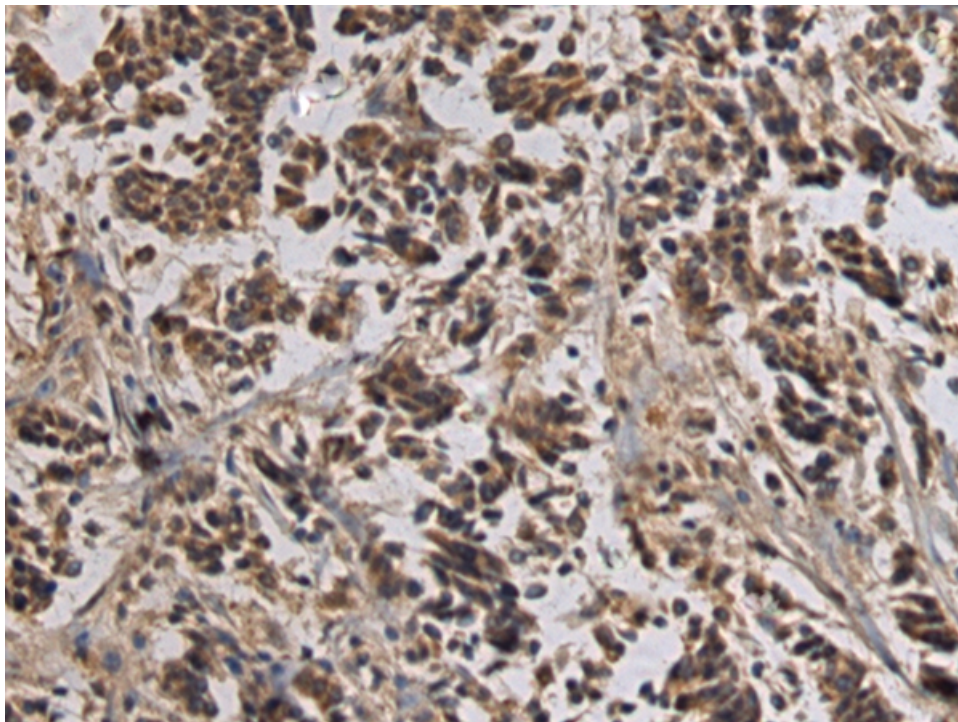
- 中文名称：兔抗 TLL1 多克隆抗体
- 英文名称：Anti-TLL1 rabbit polyclonal antibody
- 别名：tolloid like 1; TLL; ASD6
- 相关类别：一抗
- 储存：冷冻（-20℃）
- 宿主：Rabbit
- 抗原：TLL1
- 反应种属：Human, Mouse
- 标记物：Unconjugate
- 克隆类型：rabbit polyclonal

技术规格

Background:

This gene encodes an astacin-like, zinc-dependent, metalloprotease that belongs to the peptidase M12A family. This protease processes procollagen C-propeptides, such as chordin, pro-biglycan and pro-lysyl oxidase. Studies in mice suggest that this gene plays multiple roles in the development of mammalian heart, and is essential for the formation of the interventricular septum. Allelic variants of this gene are associated with atrial septal defect type 6. Alternatively spliced transcript variants encoding different isoforms have been found for this gene. [provided by RefSeq, Mar 2011]

| | |
|------------------------------------|------------------------------|
| Applications: | ELISA, IHC |
| Name of antibody: | TLL1 |
| Immunogen: | Fusion protein of human TLL1 |
| Full name: | tolloid like 1 |
| Synonyms: | TLL; ASD6 |
| SwissProt: | O43897 |
| ELISA Recommended dilution: | 5000-10000 |
| IHC positive control: | Human breast cancer |
| IHC Recommend dilution: | 100-300 |



mlbio 梅联生物
Good elisakit producers